

# Join us for networking and learning!

Grow, connect and make a difference at the ISMA Alliance Annual Meeting.

## Saturday, September 6 • The Westin Indianapolis

### Business Meeting — 8 - 9:45 a.m. • Shula's Steakhouse (inside Westin)

- Breakfast is dutch-treat. Shula's breakfast buffet is \$15.95/person, or you may order off the made-for-you menu.
- Agenda includes election of officers and nominating committee members and voting on the 2014-2015 budget

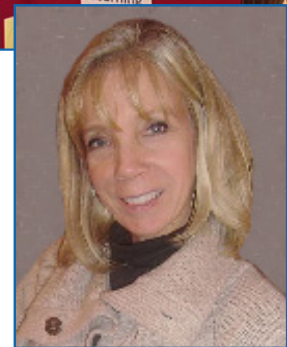
No fee for remainder of ISMA Alliance program.

### Networking — 10 a.m. • Westin, Caucus Room

- Network with other medical spouses and partners.
- Get to know what the Alliance is all about or just learn what's new: support of medical families, health education outreach throughout the state and raising money for medical scholarships.
- Refreshments will be served.
- Complimentary babysitting available.

### Guest Speaker — 10:30 a.m. • Westin, Caucus Room

- *Cathy Southerland*, Director of Early Childhood Education, Children's Museum of Indianapolis
- *Ready, Set, Play (and Learn!)* It may look like play . . . but it is the important work of young children! Through hands-on and engaging environments, research shows that children retain information longer if they experience and learn together with a significant adult in their life. Hear from Ms. Southerland about the importance of supporting a child's natural curiosity through play — whether you're a parent, caregiver, volunteer or grandparent — to help optimize his/her learning.



### Installation of Officers, Presentation of Awards/Grants

#### 11:30 a.m. • Westin, Caucus Room

- Presentation of awards and grants
- Installation of 2014-2015 officers and president
- New president's address by Betty Canavati of Fort Wayne

**RSVP your attendance at the business meeting and/or networking/guest speaker event by August 27 to Jill Bruce at [jbruce@ismanet.org](mailto:jbruce@ismanet.org) or (800) 257-4762.**

These additional events are happening at the ISMA Convention. Separate registrations and fees apply. Visit [www.ismanet.org](http://www.ismanet.org) or call (800) 257-4762 to sign up.

**IMPAC Luncheon**  
2:30 p.m. • Westin

**Presidents' Night Reception and Dinner**

6:30 p.m. • Westin  
Honoring incoming ISMA and ISMA Alliance presidents



INDIANA STATE  
**MEDICAL  
ASSOCIATION  
ALLIANCE, INC.**

*Dedicated to the health of Indiana*